

Part Number: H-CT125-28-02

Part Description: SET Part Oil Tank CT125

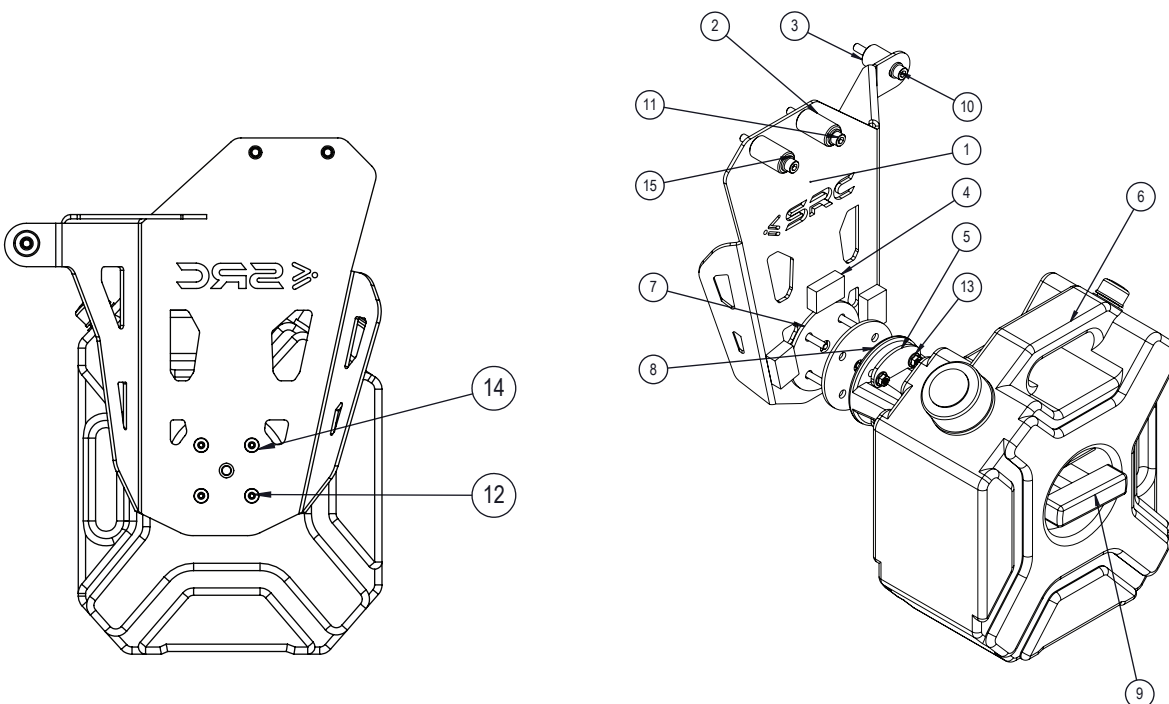
Installation / Parts List / Bill of Material for Mounting

NO.	Description	Quantity	Torque*(N-M)	Remarks**
1	RACK SIDE-H- CT125-001	1		
2	AL-OD18xID7x32	2		
3	AL-OD18xID7x25	1		
4	Rubber Sheet T10 mm	3		
5	S-VT2017-RACK-10	2		
6	Oil Tank 3 Liters-set	1		
7	S-VT2017-RACK-11	2		
8	Oil tank-2_Default_As Machined_	1		
9	Oil tank-3_Default_As Machined_	1		
10	Socket head cap screw M6x45	1		Use Liquid Thread Locker
11	Socket head cap screw M6x50	2		Use Liquid Thread Locker
12	Socket button head screw M5x25	4		Use Liquid Thread Locker
13	Hex flange nut gradea M5	4		
14	Washer M5	4		
15	Washer M6	3		

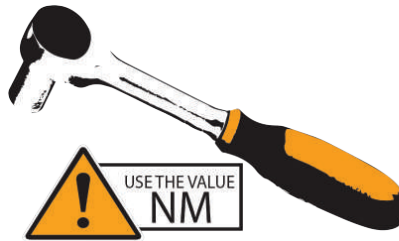
SRC Design uses Metric System of Measurement and all dimensions in Millimeters

Recommended to use the Torque specified in the table

Denotes Usage of Liquid Thread Locker in specified Locations

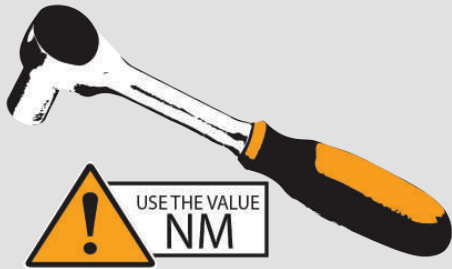


Torque Values to be used in Mounting Instructions



		M4		M5		M6		M8		M10		M12		M14		M16		M18	
code		(cs)	(Fo)	(cs)	(Fo)	(cs)	(Fo)	(cs)	(Fo)	(cs)	(Fo)	(cs)	(Fo)	(cs)	(Fo)	(cs)	(Fo)	(cs)	(Fo)
Inox	A2	2.6	—	5.1	—	8.7	—	21.2	—	42	—	73	—	118	—	180	—	258	—
steel	8.8	3	3,594	5	5,886	10	8,302	23	15,242	46	24,275	79	35,401	127	48,618	198	66,955	283	83,746
steel	10.9	4	5,279	8.1	8,645	14	12,194	34	22,388	67	35,655	116	51,995	187	71,408	291	98,340	402	119,454

Tensile load (Fo)
The force in newtons (N) which maintains pressure contact between assembled components
Tightening torque (Cs) [values are in N-m]

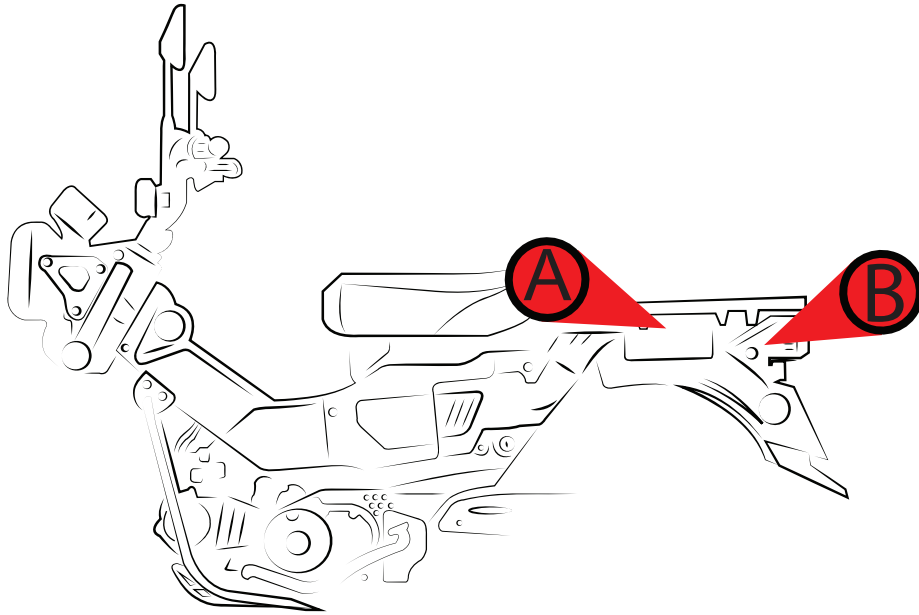


! symbol (NM), refer to the reference value given in the table above for use in the required operation And safe in operation and accuracy in inserting parts.



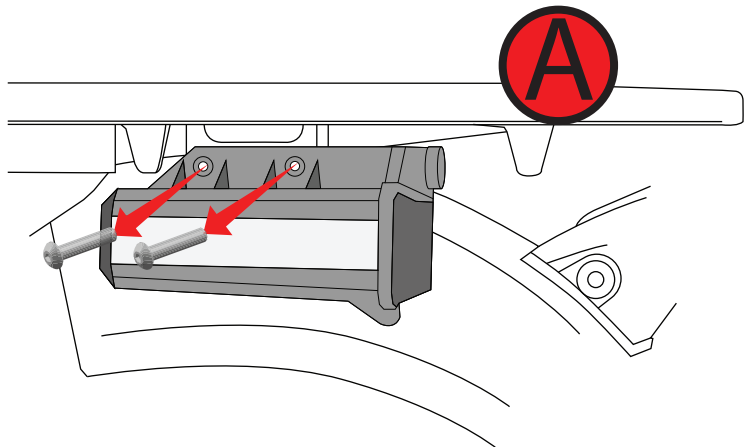
! The tool in the picture is (thread locked). When you see this mark, please insert the medicine to the point where the nut is to be inserted for the firmness and accuracy of the insertion work.

! Please check and check again to make sure that all are inserted. Every piece and don't forget any step to be safe.



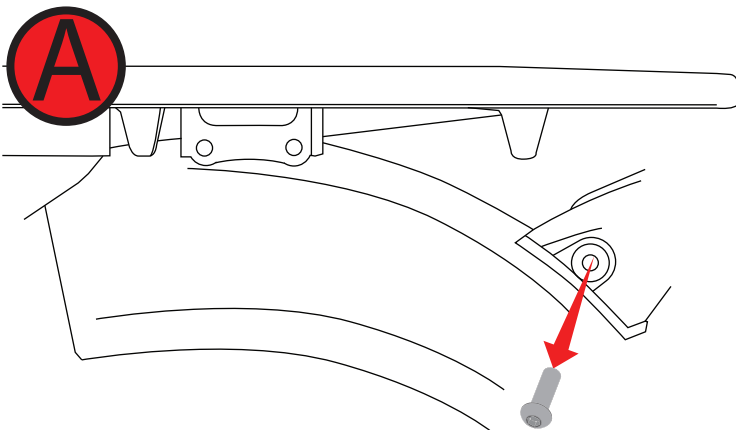
1

Remove screws,
, according to the illustration



2

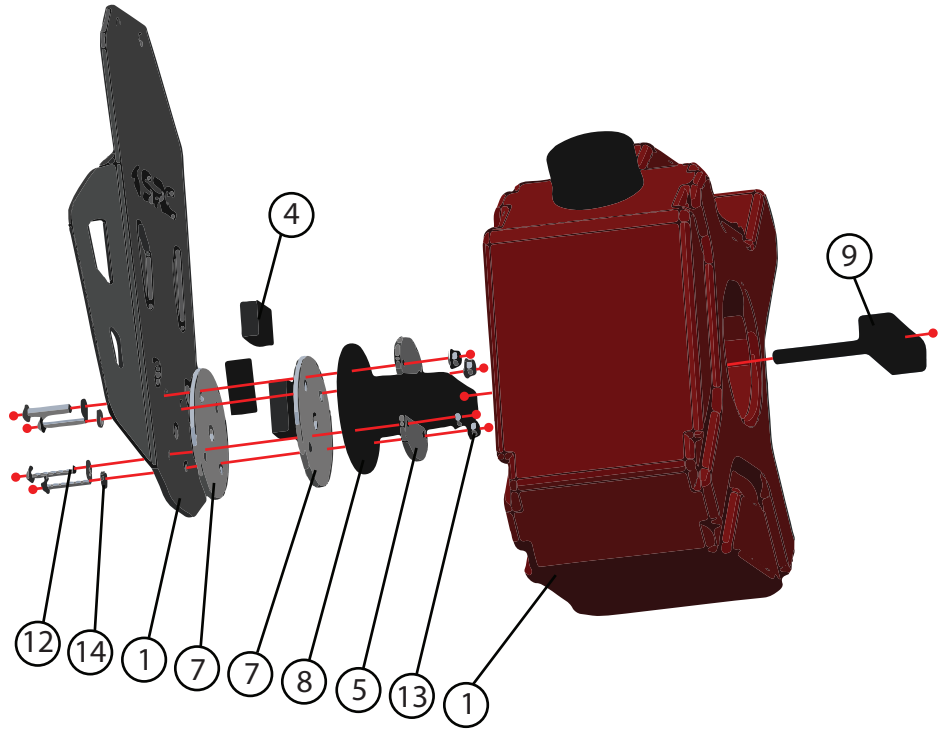
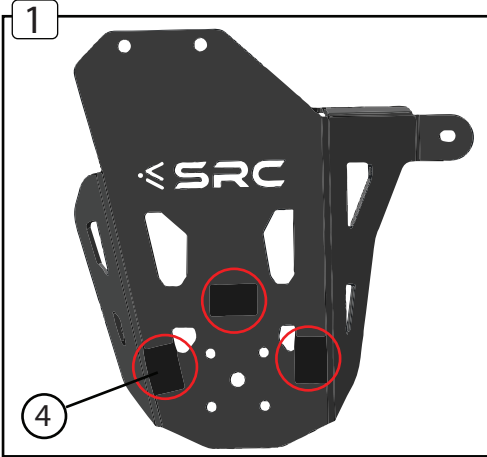
Remove screws as illustrated.



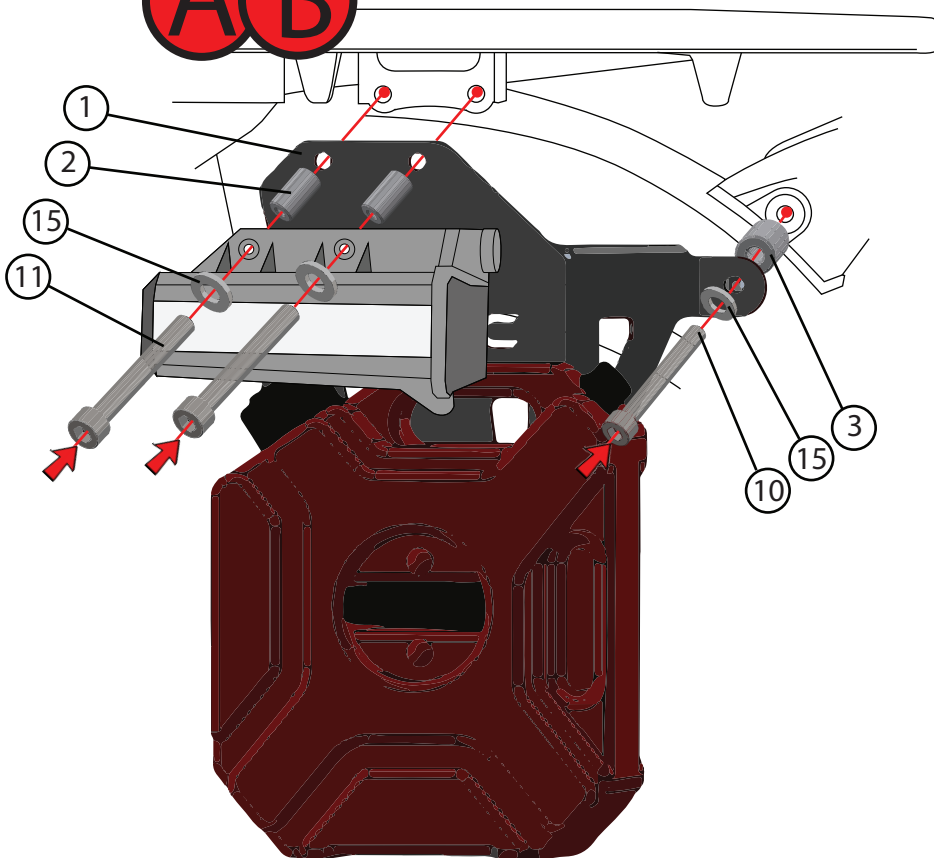
3

1 Place the Rubber wrap in the position shown on the picture.

- Prepare the parts and assemble according to the illustration.



A B



4

Prepare the parts and assemble according to the illustration.

- (1.) We request you to pay attention to the Mounting Instructions in this document and follow the step-by-step procedures.
- (2.) This Mounting Instruction manual is a “Do It Yourself” (DIY) fitment manual of the Accessory part to the Vehicle. We have prepared this based on our experience and knowledge, related to the Vehicle, Part and its functional aspects
- (3.) SRC cannot guarantee the interchangeability of the parts to any other manufacturer’s accessory part. It is advised to the User, to inspect and ensure the original state of all other Vehicle parts.
- (4.) We request you to bear in mind, that the Installed part can change the driving behaviour and/or the stability during driving or any other dynamic conditions.
- (5.) If you have the appropriate tools and another person to assist you in the mounting, it will help.
- (6.) After Completion of the Mounting and before taking on a First ride, Ensure and Check all functions of the Vehicle. It is always advised to check loosening of the fasteners after the first 50 kilo meters of ride and at regular intervals.
- (7.) To the maximum extent possible, our design use the current Mounting/Fitment of the Original Equipment, so that Installation of these accessories will not affect the Payload or Function of the Vehicle or the Part on which it is mounted to protect it.
- (8.) If any additional modifications are to be done, prior to the fitment of the accessories, it will be explicitly specified in the instruction sheets

