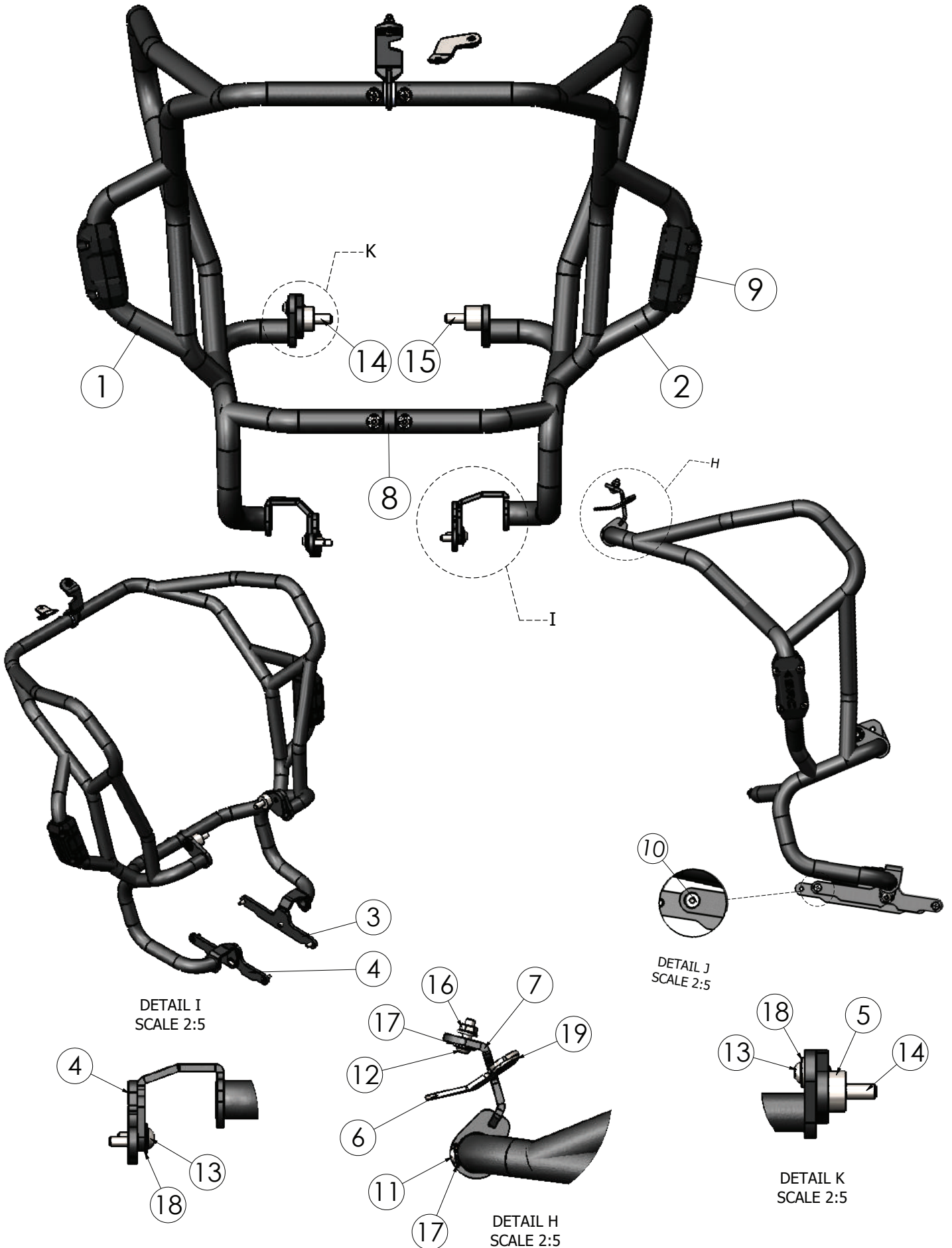


Part Number: CRASH BAR BMW G 310 GS

Part Description: BMW G 310 GS

Installation / Parts List / Bill of Material for Mounting

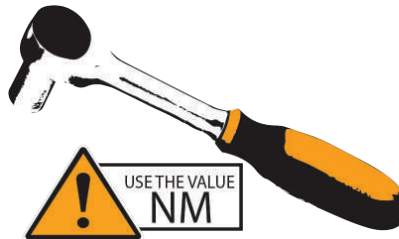
NO.	Description	Quantity	Torque*(N-M)	Remarks**
1	Bar RH	1		
2	Bar LH	1		
3	Plate RH	1		
4	Plate LH	1		
5	Plate B	1		
6	Plate C	1		
7	Top bracket	1		
8	Pin pipe	1		
9	Sliders Guards	2		
10	Socket countersunk head screw M6x15	4		Use Liquid Thread Locker
11	Socket button head screw M6x10	4		Use Liquid Thread Locker
12	Socket button head screw M6x20	1		Use Liquid Thread Locker
13	Socket button head screw M8x20	3		Use Liquid Thread Locker
14	Socket head cap screw M10x30	1		Use Liquid Thread Locker
15	Socket head cap screw M10x40	1		Use Liquid Thread Locker
16	Hex flange nut gradea M6	1		
17	Washer M6	5		
18	Washer M8	3		
19	Washer M10	1		
SRC Design uses Metric System of Measurement and all dimensions in Millimeters				
Recommended to use the Torque specified in the table				
Denotes Usage of Liquid Thread Locker in specified Locations				



Torque Values to be used in Mounting Instructions

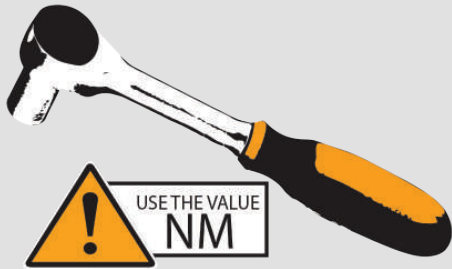


code



		M4		M5		M6		M8		M10		M12		M14		M16		M18	
	code	(cs)	(Fo)	(cs)	(Fo)	(cs)	(Fo)	(cs)	(Fo)	(cs)	(Fo)	(cs)	(Fo)	(cs)	(Fo)	(cs)	(Fo)	(cs)	(Fo)
Inox	A2	2.6	—	5.1	—	8.7	—	21.2	—	42	—	73	—	118	—	180	—	258	—
steel	8.8	3	3,594	5	5,886	10	8,302	23	15,242	46	24,275	79	35,401	127	48,618	198	66,955	283	83,746
steel	10.9	4	5,279	8.1	8,645	14	12,194	34	22,388	67	35,655	116	51,995	187	71,408	291	98,340	402	119,454

Tensile load (Fo)
 The force in newtons (N) which maintains pressure contact between assembled components
Tightening torque (Cs) [values are in N-m]

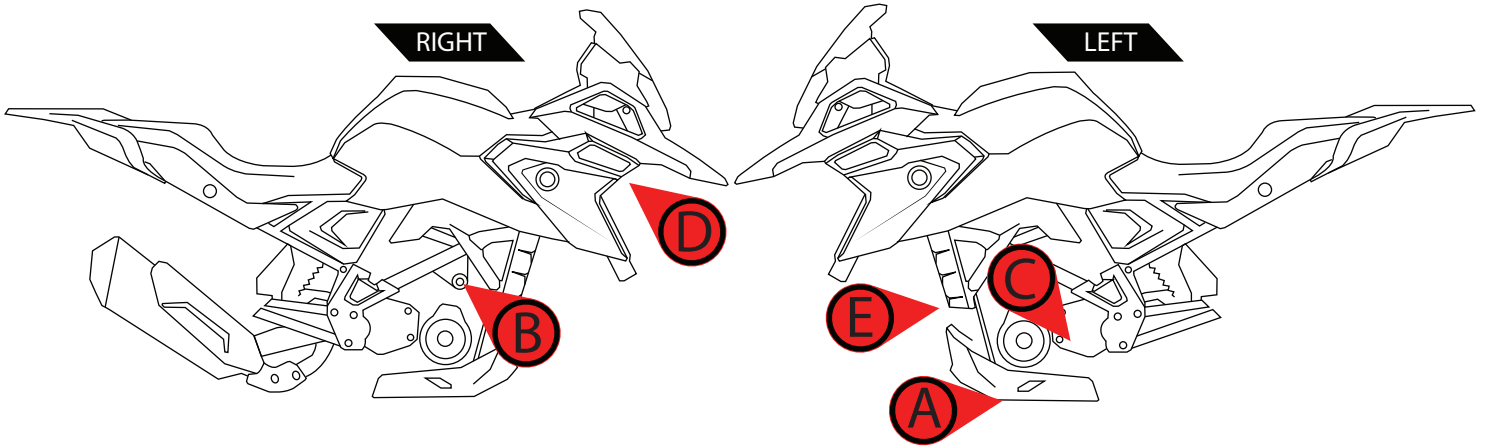


! symbol (NM), refer to the reference value given in the table above for use in the required operation And safe in operation and accuracy in inserting parts.



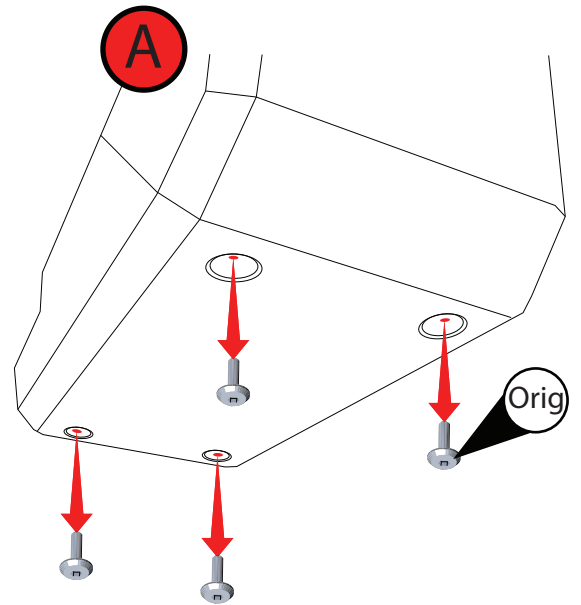
! The tool in the picture is (thread locked). When you see this mark, please insert the medicine to the point where the nut is to be inserted for the firmness and accuracy of the insertion work.

! Please check and check again to make sure that all are inserted. Every piece and don't forget any step to be safe.



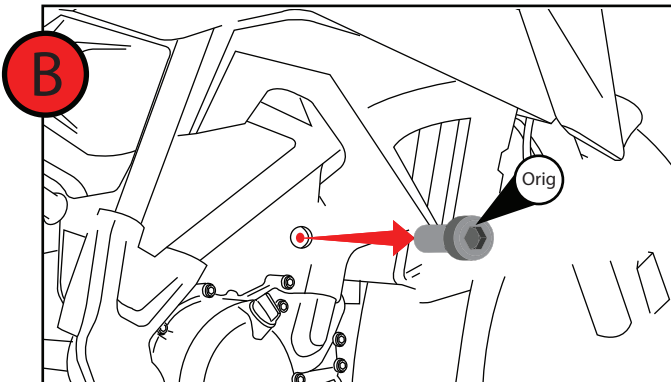
Step 1

Remove original Screw according to illustration



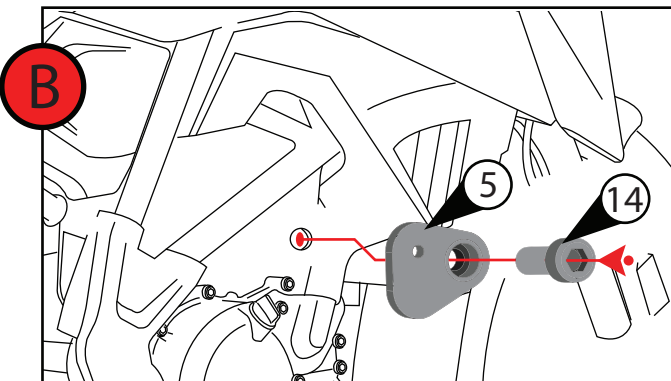
Step 2 RIGHT

Remove original both according to illustration



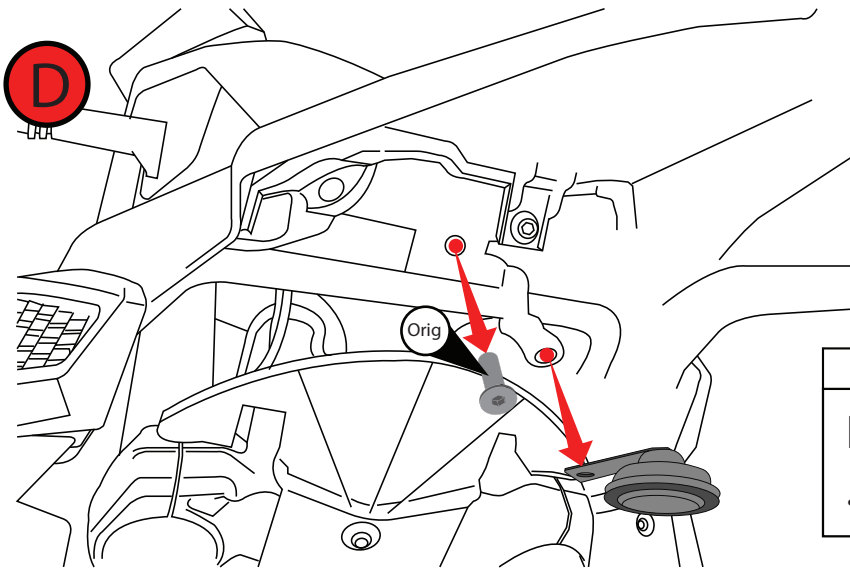
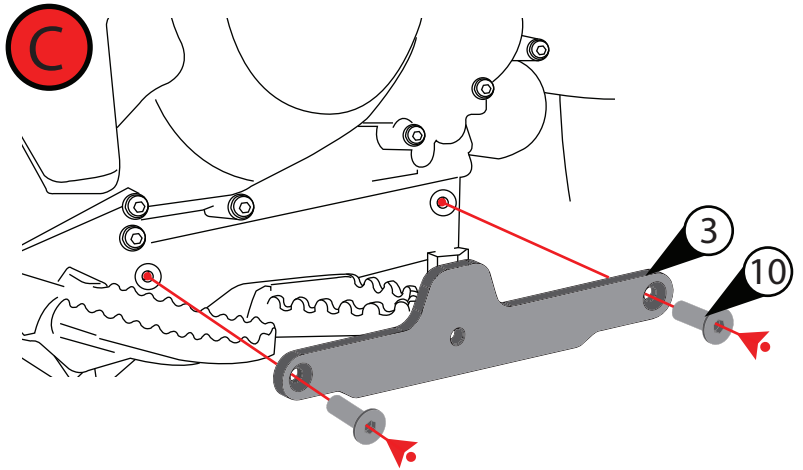
Step 3 RIGHT

Install (Top bracket), screw M10x30 as illustrated



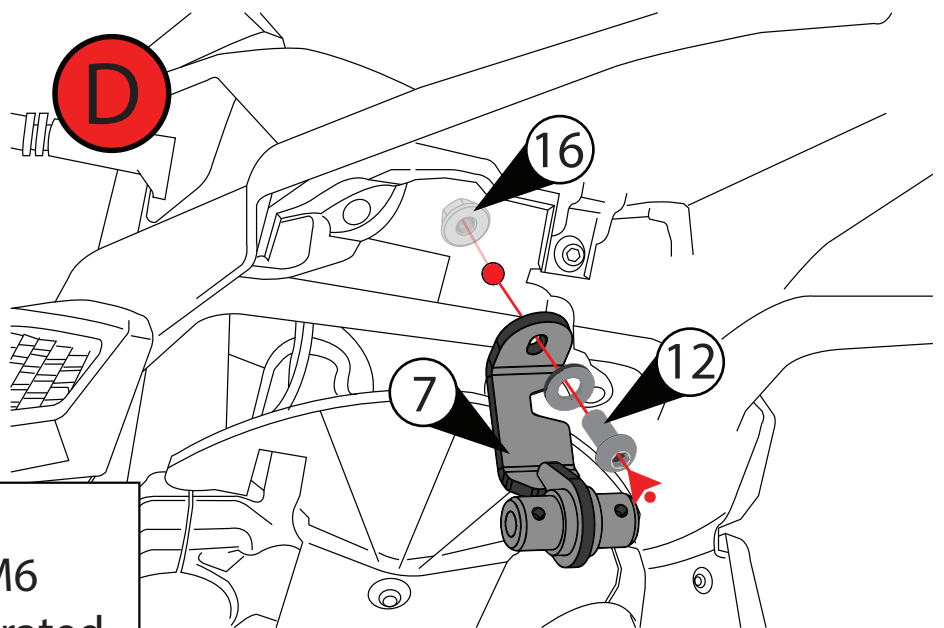
Step 4 RIGHT

Install
(Plate RH), screw M6x15
as illustrated



Step 5

Remove original screw
.according to illustration

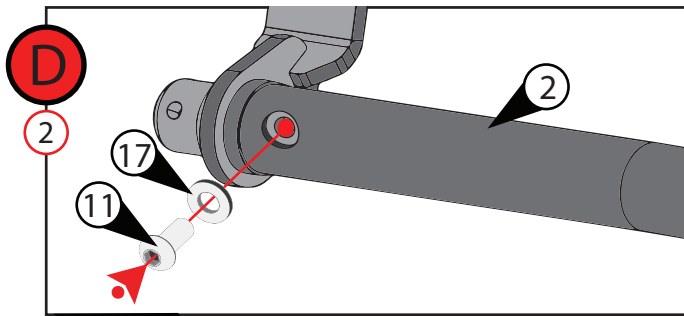
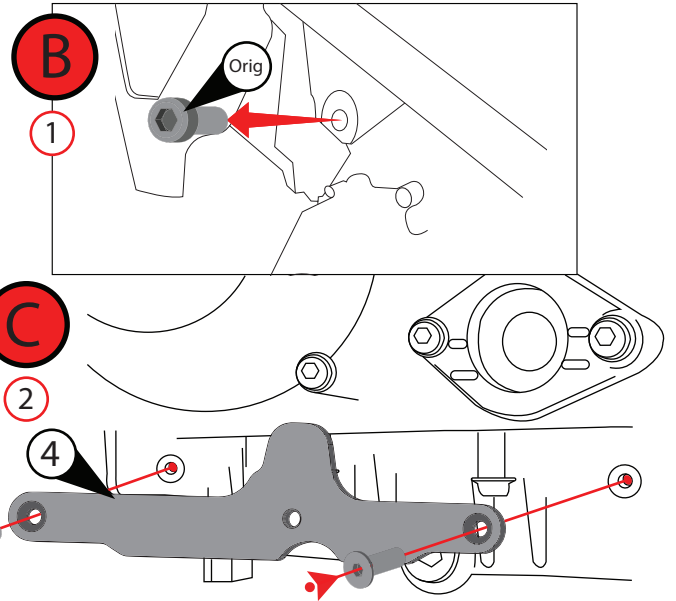


Step 6

Insert screw M6x20 ,
Hex flange nut gradea M6
and Top bracket as illustrated.

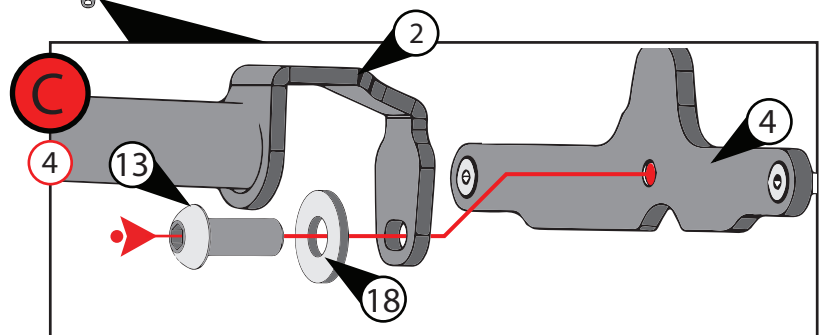
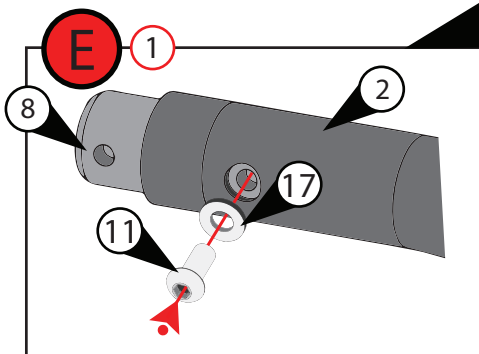
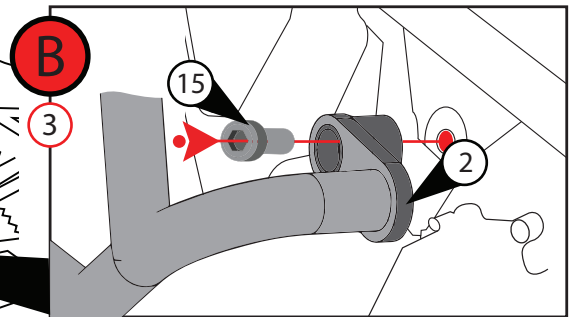
Step 7 LEFT

- ① Remove original both according to illustration
- ② Install (Plate RH), screw M6x15 as illustrated



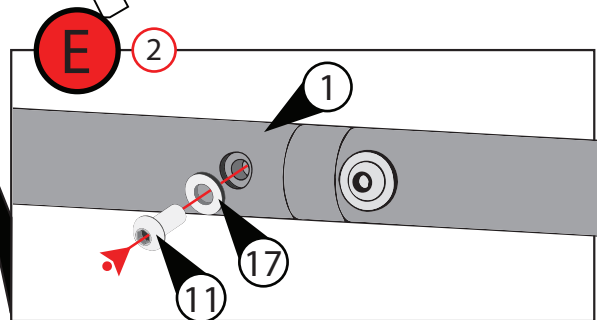
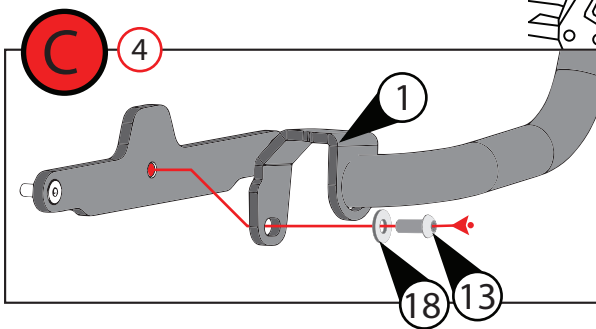
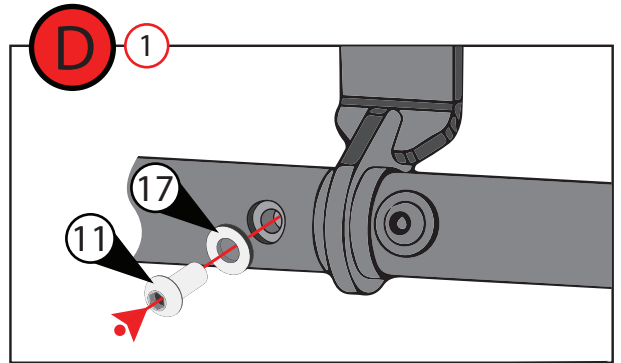
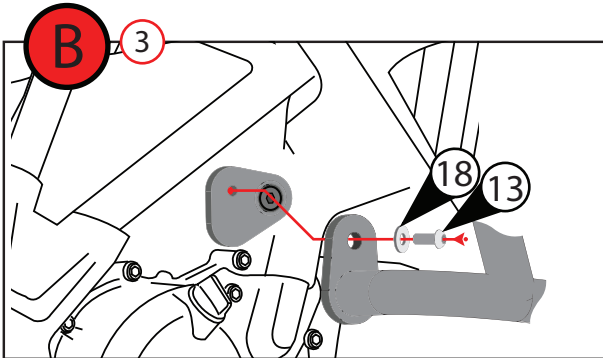
Step 8 LEFT

- ① Install screw M6x10, washer M6, pin pipe as illustrated
- ② Install screw M6x10, washer M6 as illustrated
- ③ Install Bar LH, screw M10x40 as illustrated
- ④ Install Bar LH, screw M8x20, washer M8 as illustrated



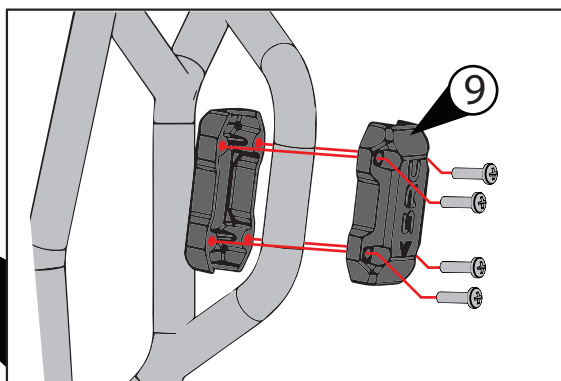
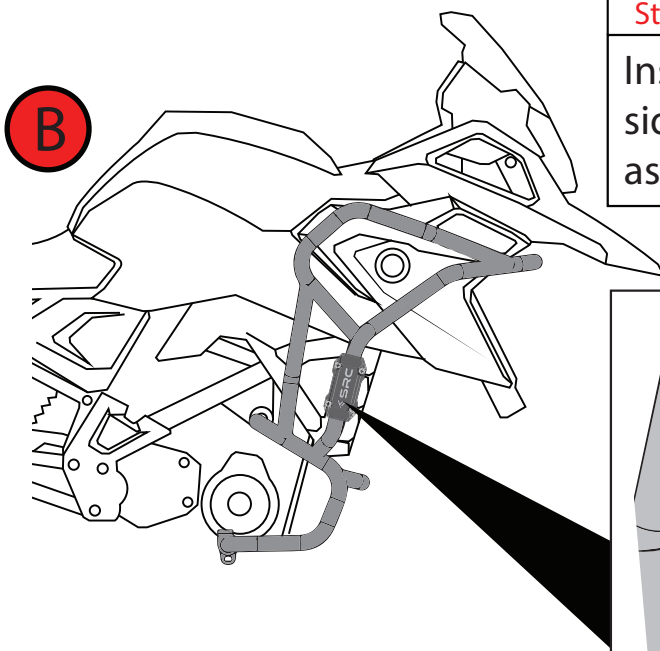
Step 9 RIGHT

- ① Install screw M6x10 ,washer M6 as illustrated
- ② Install screw M6x10 ,washer M6 as illustrated
- ③ Install Bar RH ,screwM8x20,washer M8 as illustrated
- ④ Install Bar RH ,screw M8x20,washerM8 as illustrated



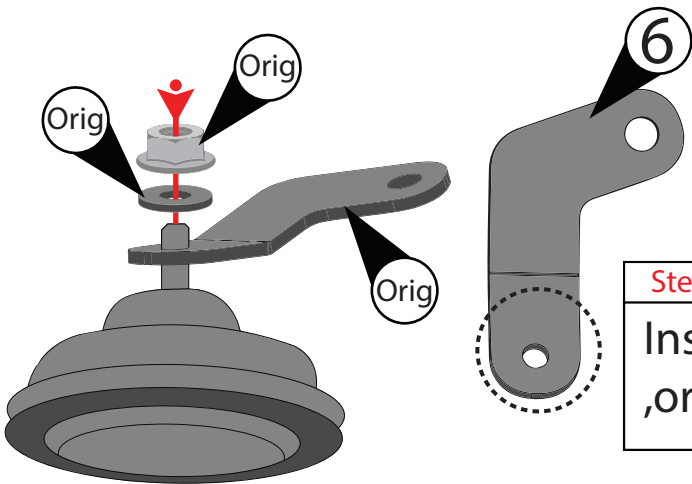
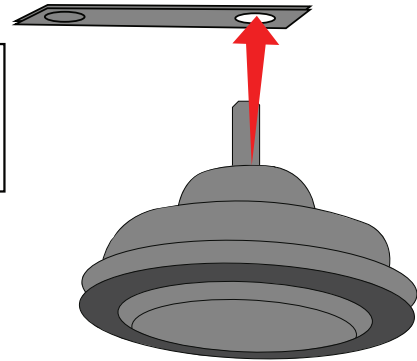
Step 10 LEFT RIGHT

Install Sliders Guards the left-right sides as illustrated. as illustrated



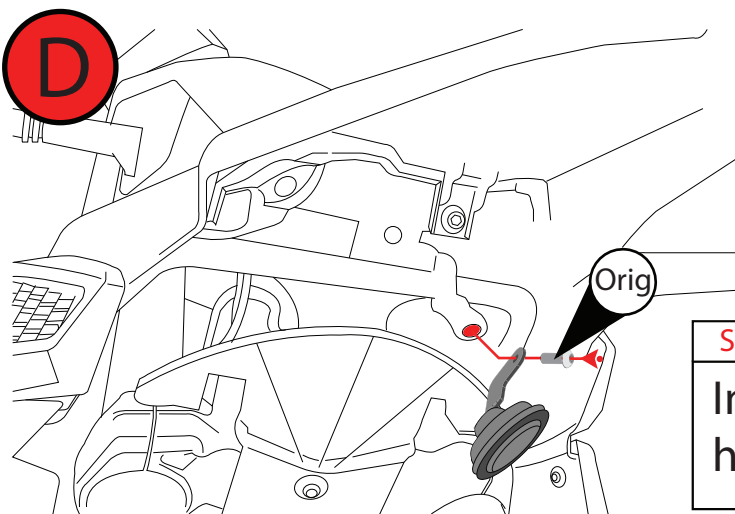
Step 11

Remove original nut gradea,original Plate according to illustration



Step 11

Install Plate C ,original nut gradea ,original washer according to illustration



Step 12

Install original screw horn as illustrated.



Make sure they are inserted correctly.

- (1.) We request you to pay attention to the Mounting Instructions in this document and follow the step-by-step procedures.
- (2.) This Mounting Instruction manual is a “Do It Yourself” (DIY) fitment manual of the Accessory part to the Vehicle. We have prepared this based on our experience and knowledge, related to the Vehicle, Part and its functional aspects
- (3.) SRC cannot guarantee the interchangeability of the parts to any other manufacturer’s accessory part. It is advised to the User, to inspect and ensure the original state of all other Vehicle parts.
- (4.) We request you to bear in mind, that the Installed part can change the driving behaviour and/or the stability during driving or any other dynamic conditions.
- (5.) If you have the appropriate tools and another person to assist you in the mounting, it will help.
- (6.) After Completion of the Mounting and before taking on a First ride, Ensure and Check all functions of the Vehicle. It is always advised to check loosening of the fasteners after the first 50 kilo meters of ride and at regular intervals.
- (7.) To the maximum extent possible, our design use the current Mounting/Fitment of the Original Equipment, so that Installation of these accessories will not affect the Payload or Function of the Vehicle or the Part on which it is mounted to protect it.
- (8.) If any additional modifications are to be done, prior to the fitment of the accessories, it will be explicitly specified in the instruction sheets

